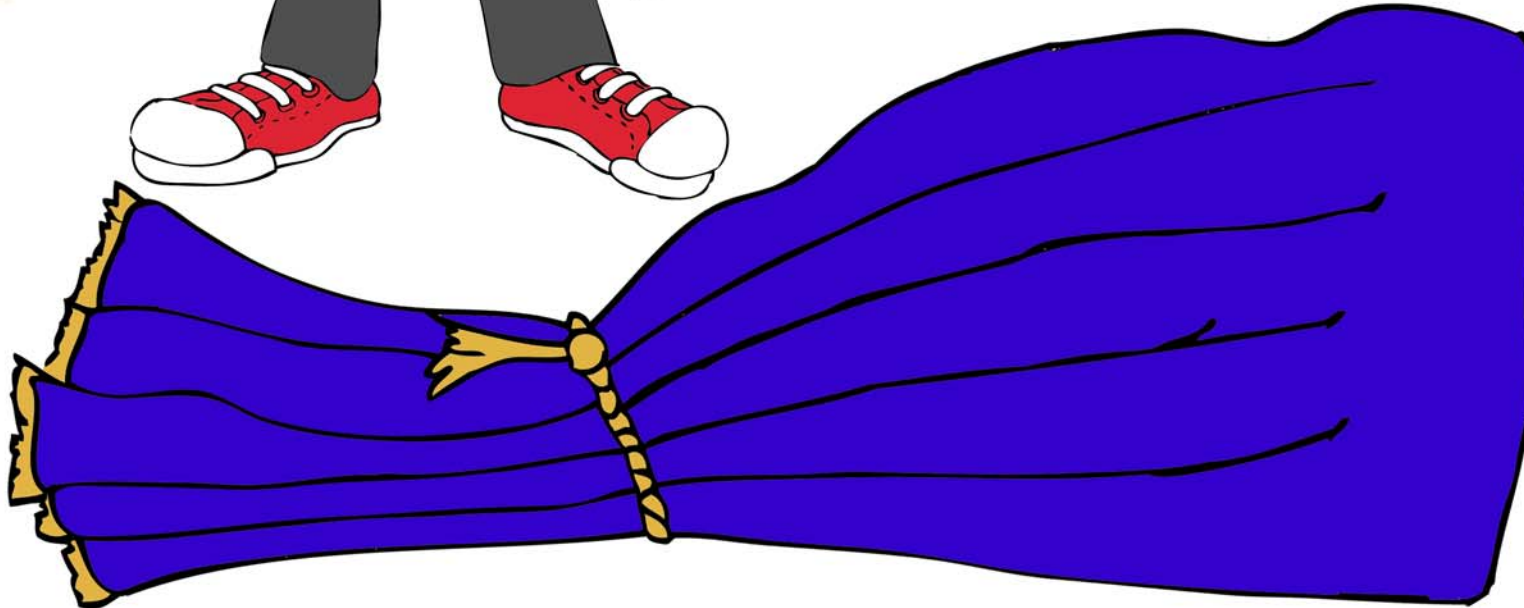


TALL TED'S PUPPET THEATRE



1. Find a grownup to help you (like Mum, Dad, Nanna or Pop).
2. Get yourself an empty 805g box of cereal (I used a box of Nutri-Grain as I want to be an Iron Bear someday).
3. Cut the side of the box out, this will be the bottom of the theatre.
4. Cut a rectangular hole in the front of the box - this will be the stage of your theatre. Leave at least 4 cm of the box so the box will not fall apart (keep the piece you just cut out for step 10).
5. Glue up the top of the box where it had been opened.
6. Using poster paint, paint the box (use old newspaper to protect your work surface). Let it dry completely.
7. Cut out the curtains and glue to the sides of the box. Glue the Story Time back drop to the back of the box.
8. Cut out the Theatre sign and glue to the top of the box.
9. Glue Tall Ted to the piece you cut out during step 4.
10. Cut out Tall Ted and glue an ice-cream stick to his back.
11. You now have a Tall Ted Puppet Theatre, complete with a Tall Ted puppet.

